

YEAR IN REVIEW: 2023

Celebrating another year of supporting organisations to evaluate, understand, and improve the differences they are making



We delivered...



We grew our core team...



Adrian Field



Amanda Hunter



Emily Garden



Georgia Parslow



Olivia Gregg



Rachael Butler

Plus our network of over 20 collaborators

Our work supported...

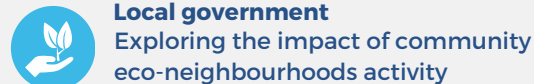
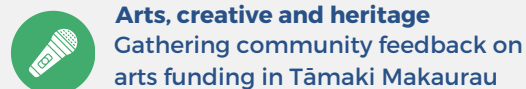
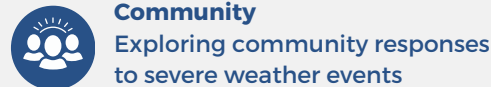
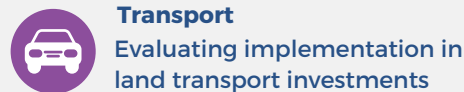
18
Clients in total



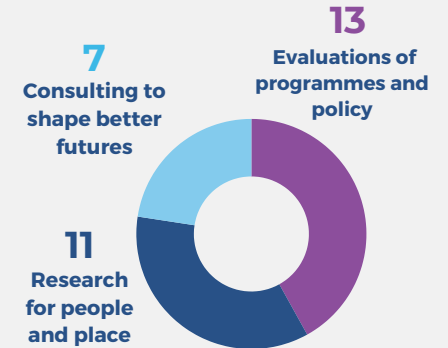
Across a range of sectors...



Some of our work explored...



Projects focused on...



We also supported our pro-bono partners...

Aotearoa NZ Evaluation Association

Raukatauri Music Therapy Centre

Basement Theatre

Malaghan Institute

94 Pro bono hours

2.8% of our revenue in direct or pro bono support to not-for-profits

We became a B Corp!

68% of our **suppliers** were women, Māori or from diverse communities

60% of **expenditure** was on local suppliers

81% of **revenue** was from purpose driven clients



*Figures from the FY 22/23